

**BAXI**



# Luna Platinum +

## SPARE PARTS CATALOGUE

- February 2016 -



## HOW TO READ THE SPARE PARTS CATALOGUE

In the spare part catalogue, after the exploded diagrams, there are the components lists of the boilers; this is the meaning of the different columns:

**Pos.** Identification number of the component in the exploded diagram of the boiler.

**Description** Short description of the component.

**Code** BAXI S.p.A. code of the component.

**Tab. XX** XX is the exploded diagram number of the boiler taken into

**From serial number** Date (year and week) identifying the beginning of production of a component (taken from the serial number of the boiler).

e.g. **1201: year 2012** (1 identifies the decade 2010-2019; 2 identifies the year) – **1th week**.

If the box is empty, the component is in use from the beginning of production of the boiler.

**To serial number** Date (year and week) identifying the end of production of a component (taken from the serial number of the boiler).

e.g. **1225: year 2012** (1 identifies the decade 2010-2019; 2 identifies the year) – **25<sup>th</sup> week**.

If the box is empty, the component is still in use.

**Interchangeable** It identifies the interchangeability between the new component and the old one.

YES: components are interchangeable.

NO: components are not interchangeable

## TABELLA COLLEGAMENTO CODICE CALDAIA - ESPLOSO TABLEAU CONNECTION CODEX CHAUDIERE - VUE ECLATEE BOILERS CONNECTION BOARD - EXPLODED VIEW

BOILER CODE	BOILER DESCRIPTION	EXPLODED REF.
CODICE CALDAIA	DESCRIZIONE CALDAIA	RIF. ESPLOSO
CODIGO CALDERA	DESCRIPCION CALDERA	REF. EXPLOSIONADO
CODE CHAUDIÈRE	DESCRIPTION CHAUDIÈRE	RÉF. EXPLOSÉE
721968801/2	LUNA PLATINUM+ 1.12 GA	Tab 556
721968901/2	LUNA PLATINUM+ 1.18 GA	Tab 556
721969001/2	LUNA PLATINUM+ 1.24 GA	Tab 556
721969101/2	LUNA PLATINUM+ 1.32 GA	Tab 556
721969201/2	LUNA PLATINUM+ 24 GA	Tab 557
721969301/2	LUNA PLATINUM+ 33 GA	Tab 557

# Luna Platinum +

08/02/2016

Pos	Code	Description code							To serial number	From serial number	Intercha ngeable:
			721968801/2 1.12 GA	721968901/2 1.18 GA	721969001/2 1.24 GA	721969101/2 1.32 GA	721969201/2 24 GA	722969301/2 33 GA			
2	710066300	LEFT PANEL ASSEMBLY	•	•	•	•	•	•			
3	710066200	RIGHT PANEL ASSEMBLY	•	•	•	•	•	•			
4	710031300	FRONTAL PANEL ASSEMBLY	•	•	•	•	•	•			
10	5409020	FLUE ADAPTOR HE	•	•	•	•	•	•			
11	5409010	GASKET ADAPTOR	•	•	•	•	•	•			
12	5108690	PLATE BLANKING	•	•	•	•	•	•			
13	5407400	SUCTION CAP GASKET	•	•	•	•	•	•			
18	710039100	MIXER PL23 AGU3.723A009					•	•			
18	710059700	MIXER PL18 AGU 3.718			•			•			
18	710068100	MIXER PL15 AGU 3715	•	•							
21	5402050	WASHER-SEALING	•	•	•	•	•	•			
22	710692300	FAN NRG118	•	•	•	•	•	•			
27	721621100	C FRAME	•	•	•	•	•	•			
29	710283700	DEFLECTOR INSULATION SPARE	•	•	•	•	•	•			
30	5411020	INSULATION PANEL	•	•	•	•	•	•			
32	5671940	HEAT EXCHANGER BASIC 4E	•	•	•		•				
32	5671950	HEAT EXCHANGER						•			
32	5671960	HEAT EXCHANGER				•					
33	710963000	OR 21,5X3 EP70 TFL	•	•	•	•	•	•			
34	8380860	FIXING CLIP	•	•	•	•	•	•			
35	710022400	EXPANSION VASSEL 10L					•	•			
35	710022500	EXPANSION VASSEL 8L	•	•	•			•			
36	710157400	EXPANSION VESSEL PIPE	•	•	•	•	•	•			
41	711565700	BURNER 5E	•	•	•	•	•	•			
48	710282300	CONDENSING WATER TRAY 80/60 IT	•	•	•	•	•	•			
49	5409280	TAP ADAPTOR	•	•	•	•	•	•			
59	8513520	LEAD - IGNITION	•	•	•	•	•	•			
63	710220000	ELECTRODE - IGNITION	•	•	•	•	•	•			
65	710424200	FLAME SENSOR B&P	•	•	•	•	•	•			
70	710156800	PIPE PUMP - EXCHANGER	•	•	•	•	•	•			
72	722185500	PUMP UMP 15-60 6M WITH CABLE	•	•	•	•	•	•			
73	7219215	AIR VENT PUMP WI.	•	•	•	•	•	•			
73	710493600	AIR VENT PUMP GR.	•	•	•	•	•	•			
76	711613000	DHW PLATE EXCHANGER 14 PLATES						•			
76	711613200	DHW PLATE EXCHANGER 20 PLATES							•		
77	711613500	DHW PLATE EXCHANGER OR						•	•		
80	710266700	RETURN/FILLING TAP ASSY SYSTEM	•	•	•	•					
80	711607000	HYDR.INL.GR.WITH OUT BYPASS 8L						•			
80	711607300	HYDR.INL.GR.WITH OUT BYPASS10L							•		
81	711633400	FILTER TRANSD.RIDUCT.8L ASSEMB						•			
81	711633500	FILTER ASS.WITH RED.10L-100291							•		
87	711652200	PUMP CONNECTING ELEMENT/OR GRU						•	•		
90	620890	FILLING GR.WITH TURBINE 120074						•	•		

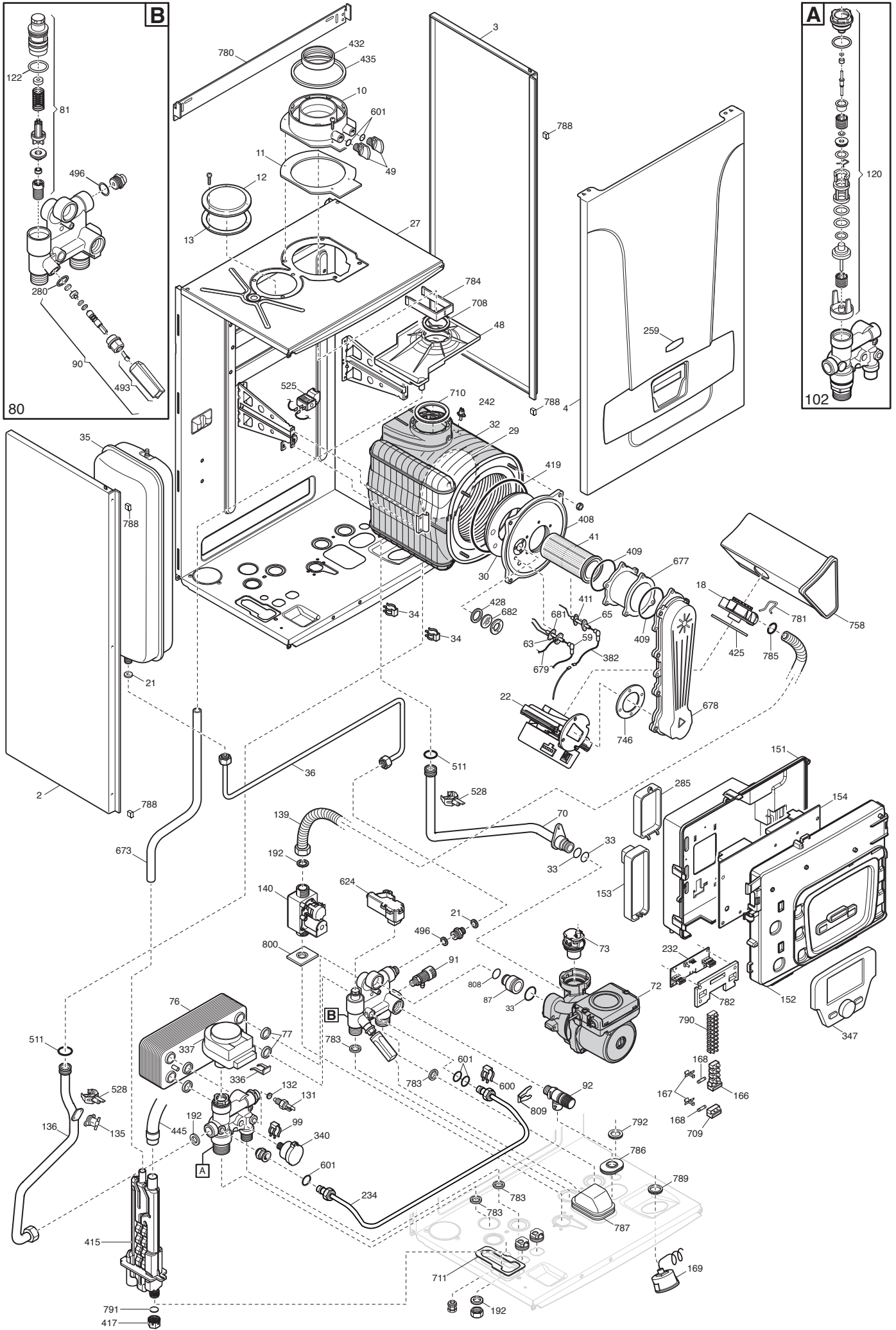
Pos	Code	Description code							To serial number	From serial number	Intercha ngeable:
			721968801/2 1.12 GA	721968901/2 1.18 GA	721969001/2 1.24 GA	721969101/2 1.32 GA	721969201/2 24 GA	722969301/2 33 GA			
91	5652030	DRAINING TAP	•	•	•	•	•	•			
92	9951170	SAFETY VALVE 3 BAR	•	•	•	•					
92	710109400	HYDRAULIC SAFETY VALVE 3 BAR					•	•			
98	5672770	BY-PASS PIPE ASSEMBLY	•	•	•	•					
99	8380850	FIXING CLIP	•	•	•	•	•	•			
102	5683540	3 WAY VALVE/MB GROUP LUNA3	•	•	•	•					
102	711605800	3 WAY VALVE ASS.					•	•			
113	617100	BY-PASS GR.	•	•	•	•					
119	605760	HYDRAULIC VENTURI ASSEMBLY	•	•	•	•					
120	600750	SPACER ASSEMBLY	•	•	•	•					
120	711356900	3 WAY VALVE CARTRIDGE					•	•			
122	5405370	O-RING					•	•			
131	8435400	NTC SENSOR					•	•			
132	5402830	WASHER - SENSOR SEALING					•	•			
135	9950760	THERMOSTAT - LIMIT	•	•	•	•	•	•			
136	710156700	FLOW PIPE				•					
136	710157700	FLOW PIPE	•	•	•		•	•			
139	710022000	FLEXIBLE GAS PIPE 4/5 ELEMENTS	•	•	•		•	•			
139	710070700	FLEXIBLE GAS PIPE 6E ELEMENTS				•					
140	710452600	GAS VALVE VGE 56 SIEMENS	•	•	•	•	•	•			
151	710018500	CONTROL PANEL COVER	•	•	•	•	•	•			
152	710019900	CONTROL PANEL	•	•	•	•	•	•			
153	710018200	TERMINAL BLOCK COVER	•	•	•	•	•	•			
154	722206700	PCB LMS 15	•								
154	722206800	PCB LMS15		•							
154	722206900	PCB LMS 15			•						
154	722207100	PCB LMS15				•					
154	722207300	PCB LMS15					•				
154	722207600	PCB LMS15						•			
166	8421590	TERMINAL BLOCK	•	•	•	•	•	•			
167	5405340	FUSE HOLDER	•	•	•	•	•	•			
168	9950580	FUSE	•	•	•	•	•	•			
169	710554900	MANOMETER	•	•	•	•	•	•			
191	5408970	WASHER - SEALING G1/2	•	•	•	•					
192	5404650	SEALING WASHER G 3/4	•	•	•	•	•	•			
232	710028100	BRIDGE PCB	•	•	•	•	•	•			
242	8435270	NTC SENSOR	•	•	•	•	•	•			
259	710419300	BRAND BAXI	•	•	•	•	•	•			
280	5207730	GASKET 14,2X18X1,5					•	•			
285	710083600	COVER CLIP-IN	•	•	•	•	•	•			
336	8380680	CLIP-RETAINING	•	•	•	•	•	•			
337	5694580	3 WAY VALVE MOTOR	•	•	•	•	•	•			
340	710109100	PRESSURE SENSOR	•	•	•	•	•	•			
347	710628400	REMOTE CONTROL 2S	•	•	•	•	•	•			

Pos	Code	Description code								To serial number	From serial number	Intercha ngeable:
			721968801/2 1.12 GA	721968901/2 1.18 GA	721969001/2 1.24 GA	721969101/2 1.32 GA	721969201/2 24 GA	722969301/2 33 GA				
382	8511130	FLAME SENSING CABLE	•	•	•	•	•	•				
408	711571000	COMB.CHAMBER UPPER COVER	•	•	•	•	•	•				
409	721543100	BURNER GASKET ASS.	•	•	•	•	•	•				
411	710185200	FLAME SENSING ELEC.GASKET	•	•	•	•	•	•				
415	721744200	SIPHON BODY H220	•	•	•	•	•	•				
417	721679200	PLUG SIPHON	•	•	•	•	•	•				
419	5411000	COMB.CHAMBER GASKET	•	•	•	•	•	•				
421	5408270	O-RING 11,91 X 2,62 NBR	•	•	•	•						
425	710042400	VENTURI GASKET	•	•	•	•	•	•				
428	5409290	GASKET	•	•	•	•	•	•				
432	5410420	WASHER DIA 60 OUTLET BEND	•	•	•	•	•	•				
435	5407550	WASHER DIA100 OUTER ADAPT SEAL	•	•	•	•	•	•				
445	721727100	PIPE EXCHANGER/SIPHON	•	•	•	•	•	•				
493	620880	FILLING KNOB ASS.L=50-10.0318-						•	•			
496	400020	O-RING						•	•			
510	600760	DHW PADDLE ASSEMBLY	•	•	•	•						
511	5404600	O.R. 17,86x2,62	•	•	•	•	•	•				
525	710027900	IGNITER ANSTOSS	•	•	•	•	•	•				
527	721583000	CAP	•	•	•	•						
528	710439300	SENSOR TODS	•	•	•	•	•	•				
600	5112530	SPRING						•	•			
601	5408560	O-RING 8,73x1,78	•	•	•	•	•	•				
624	8435380	FLOW RILEVATOR						•	•			
673	722085500	CONDENSY PIPE/SIPHON	•	•	•	•	•	•				
677	5212930	EXTENSION	•	•	•		•					
678	710051400	AIR-GAS CONVEYOR ASS.LUNA4	•	•	•	•	•	•				
679	8511150	EARTH/IGNITOR CABLE	•	•	•	•	•	•				
681	710185300	IGNITION ELECTRODE GASKET	•	•	•	•	•	•				
682	5211800	SIGHT GLASS	•	•	•	•	•	•				
686	5663020	BY-PASS PLUG ASSEMBLY	•	•	•	•						
708	5410970	GASKET WITH DOUBLE LIP	•	•	•	•	•	•				
709	8423160	TERMINAL BLOCK	•	•	•	•	•	•				
710	5411030	GASKET	•	•	•	•	•	•				
711	721696400	JOINT SIPHON	•	•	•	•	•	•				
732	620210	SPRING ASS.	•	•	•	•						
746	5410900	VENTURI GASKET	•	•	•	•	•	•				
758	710088400	SILENCER ASSY 40 KW	•	•	•	•	•	•				
780	710014800	UPPER SUPPORT	•	•	•	•	•	•				
781	710011400	CLIP FIX GAS PIPE	•	•	•	•	•	•				
782	710183600	GASKET PCB BRIDGE	•	•	•	•	•	•				
783	710039500	HYDRAULIC GROUP GASKET	•	•	•	•	•	•				
784	710123900	REDUCTION FLUE SUPPORT	•	•	•	•	•	•				
785	710061400	O RING GAS PIPE 18 X 3 NBR	•	•	•	•	•	•				
786	710156600	SAFETY VALVE SEAL	•	•	•	•	•	•				













**BAXI**

**BAXI S.p.A.**  
**Via Trozzetti, 20**  
**36061 BASSANO DEL GRAPPA (VI)**  
**ITALY**  
**Tel. +390424517111**  
**Telefax +390424517379**  
**E-mail. [service@baxi.it](mailto:service@baxi.it)**